

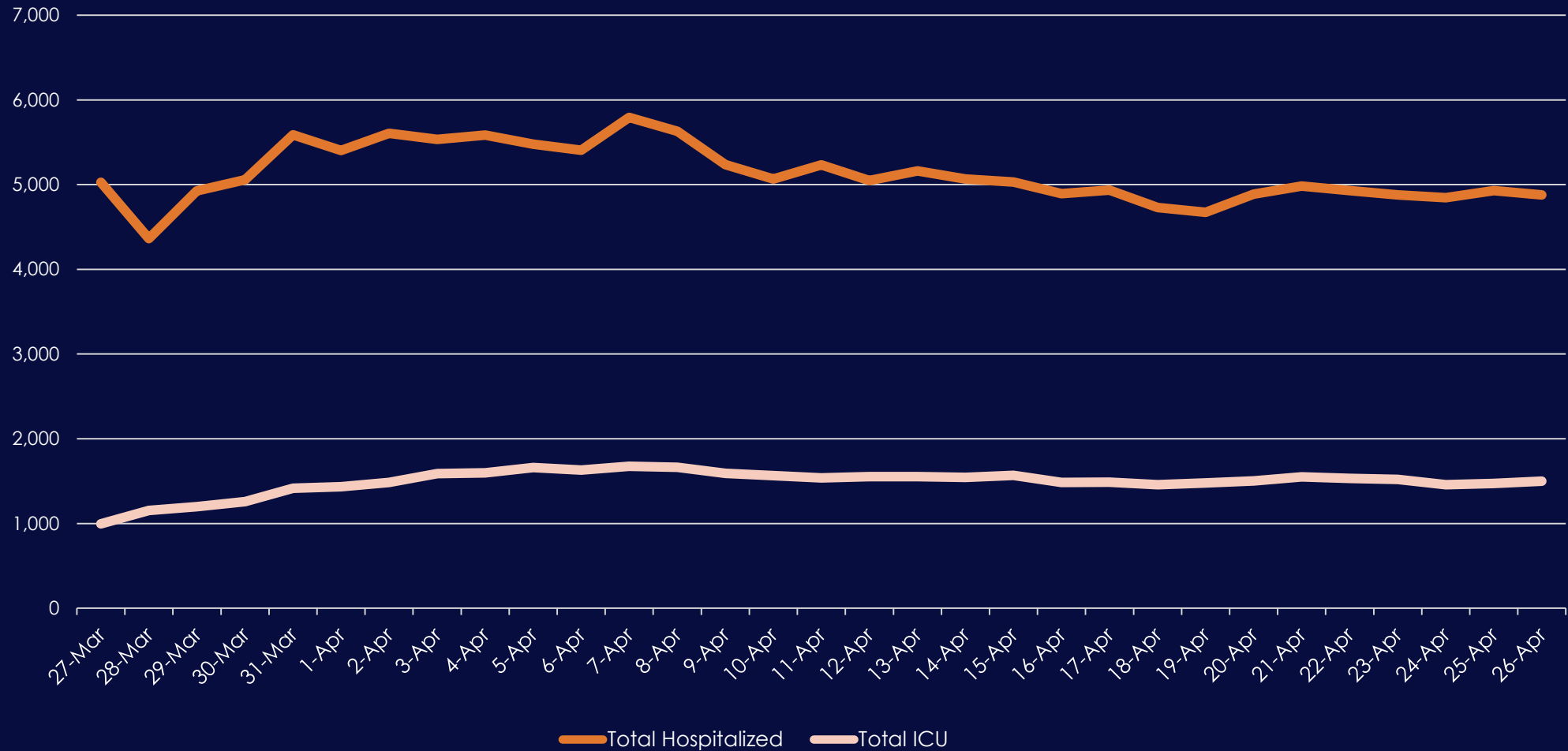


Update on California's Pandemic Roadmap

6 Indicators for Modifying Stay-at-Home Order

- Ability to test, contact trace, isolate, and support the exposed
- Ability to protect those at high risk for COVID-19
- Surge capacity for hospital and health systems
- Therapeutic development to meet the demand
- Ability of businesses, schools, and childcare facilities to support physical distancing
- Determination of when to reinstitute measures like Stay-At-Home

California Hospitalization Trend Lines



Total includes both COVID-19 confirmed positive hospitalizations as well as COVID-19 suspect hospitalizations.

The Basics



COVID-19 is not going away soon.



Modifications to Stay-At-Home Order must be guided by health risk and a commitment to equity.



Taking responsibility is key at all levels – individual, business, and government.

Resilience Roadmap Stages

STAGE 1: Safety and Preparedness

Making essential workforce environment as safe as possible.

STAGE 2: Lower Risk Workplaces

Creating opportunities for lower risk sectors to adapt and re-open.

Modified school programs and childcare re-open.

STAGE 3: Higher Risk Workplaces

Creating opportunities for higher risk sectors to adapt and re-open.

STAGE 4: End of Stay-At-Home Order

Return to expanded workforce in highest risk workplaces.

Requires
Therapeutics.

Stage 1: Safety and Preparedness

This is where we are now.

- **Continue to build out testing, contact tracing, PPE, and hospital surge capacity.**
- **Continue to make essential workplaces as safe as possible.**
 - Physical and work flow adaption
 - Essential workforce safety net
 - Make PPE more widely available
 - Individual behavior changes
- **Prepare sector-by-sector safety guidelines for expanded workforce.**

Stage 2: Lower Risk Workplaces

Gradually opening some lower risk workplaces with ADAPTATIONS:

- Retail (e.g. curbside pickup)
- Manufacturing
- Offices (when telework not possible)
- Opening more public spaces

Expanded Workforce Safety Net:

- Wage replacement so workers can stay home when sick

Stage 2: Lower Risk Workplaces

Schools and Childcare Facilities with Adaptations:

- Summer programs and next school year potentially starting sooner (July/August)
- Childcare facilities to provide more care
- Address learning gaps
- Ensure students and staff are protected
- Allow broader workforce to return to work

Actions needed to get from Stage 1 to Stage 2



Government Actions

- Policies that allow people to stay home when they're sick
- Guidance provided on how to reduce risk



Business Actions

- Wage replacement so workers can stay home when sick
- Implement adaptations to lower-risk workplaces NOW
- Employees continue to work from home when possible



Individual Actions

- Safety precautions – physical distancing, face coverings, etc.
- Avoid all non-essential travel
- Support and care for people who are at high risk

When are we ready for Stage 2?

Key indicator considerations to move to Stage 2:

- Hospitalization and ICU trends stable.
- Hospital surge capacity to meet demand.
- Sufficient PPE supply to meet demand.
- Sufficient testing capacity to meet demand.
- Contact tracing capacity statewide.

Transition to Stage 2 will occur through a statewide modification to the Stay-At-Home Order.

Opportunity for Regional Variations

During Stage 2, counties may choose to relax stricter local orders at their own pace.

Following Stage 2, once a statewide COVID-19 surveillance system is made possible through testing, further regional variations could be supported.

State will consult and collaborate closely with local governments.

Stage 3: Higher Risk Workplaces

Open higher risk environments with adaptations and limits on size of gatherings:

- Personal care (hair and nail salons, gyms)
- Entertainment venues (movie theaters, sports without live audiences)
- In-person religious services (churches, weddings)

Stage 4: End of Stay-At-Home Order

Re-open highest risk workplaces with all indicators satisfied once therapeutics have been developed:

- Concerts
- Convention Centers
- Live audience sports

Be Part of the Solution

Stay Home. Practice Physical Distancing.

We are enlisting all Californians to help inform the development of guidance for sectors across our economy.

This guidance will provide a framework for how to safely re-open.

CALIFORNIA
ALL

**Your Actions
Save Lives**

covid19.ca.gov